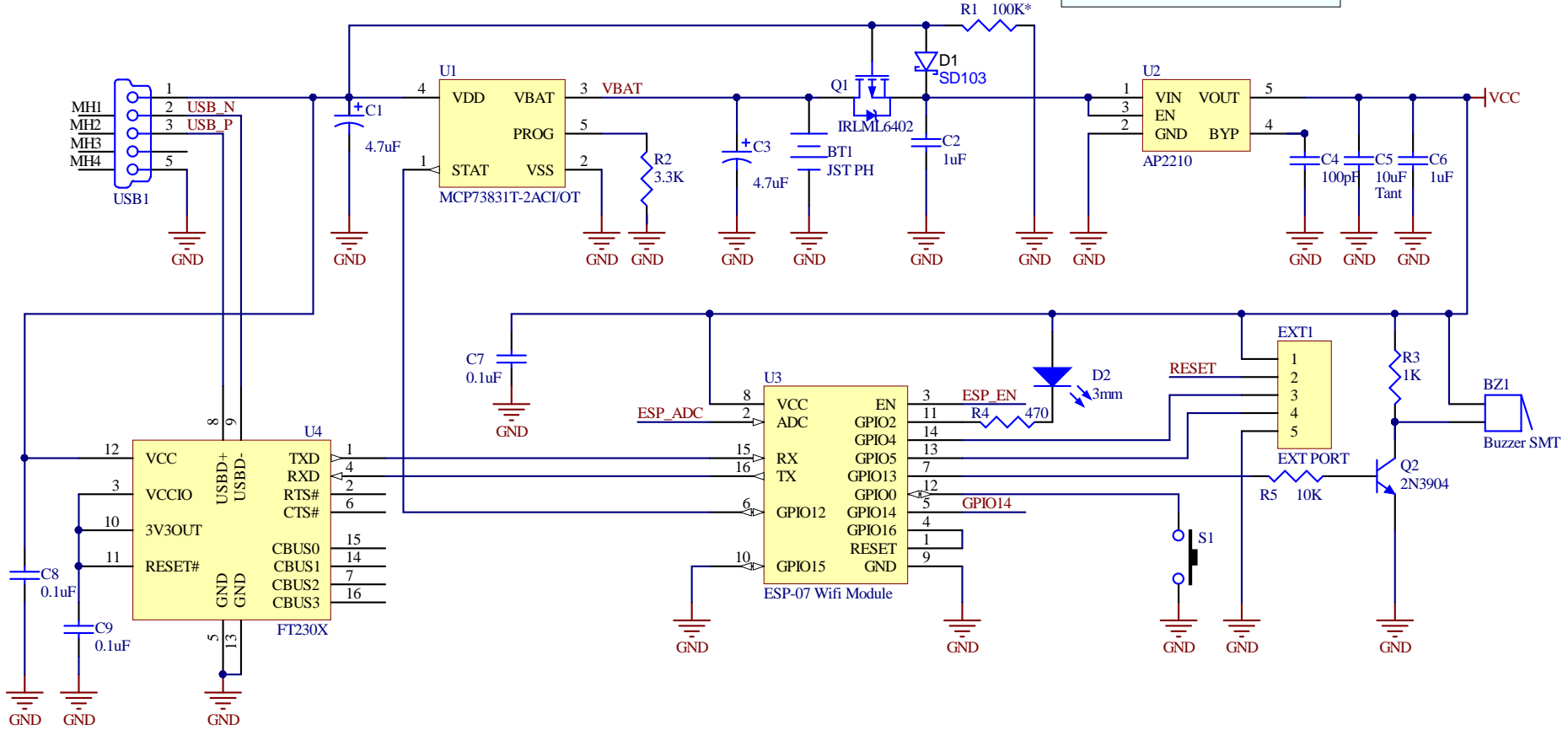
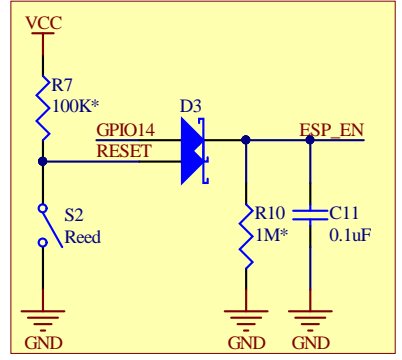


$R_d = 4.2v / \text{leakage of D1}$   
 $= 840k \text{ (with 50A leakage)}$

$R1(\text{max}) = V_g * R_d / (4.2 - V_g)$   
 $= 0.5 * 840k / (4.2 - 0.5)$   
 $= 113k$



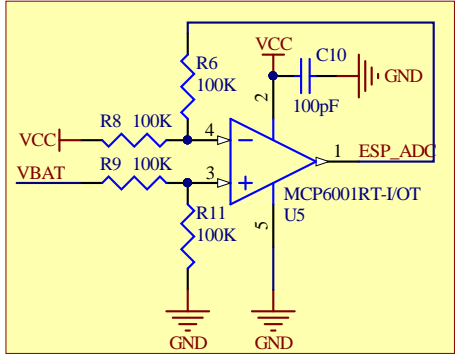
**RESET INHIBITOR**



$R7 = \text{EN max pull-up}$   
 $R10 = 10x R7$

Increasing R7 can lead to instability but decreases current draw.

**VOLTAGE MONITOR**



Differential amplifier  
 $\text{Out} = V_{bat} - V_{cc}$   
 $0.2v < \text{Out} < 0.9v$

Title		
<b>Trinkets v1.0</b>		
Size	Number	Revision
A		<b>5</b>
Date:	12/22/2018	Sheet of
File:	C:\Users\...\Schematic.SchDoc	Drawn By: <b>Colin Iuliano</b>